

4 Main window

Menu bar

Displays the menus [File], [Edition], [Analysis], [Design], [Tools] and [Help]

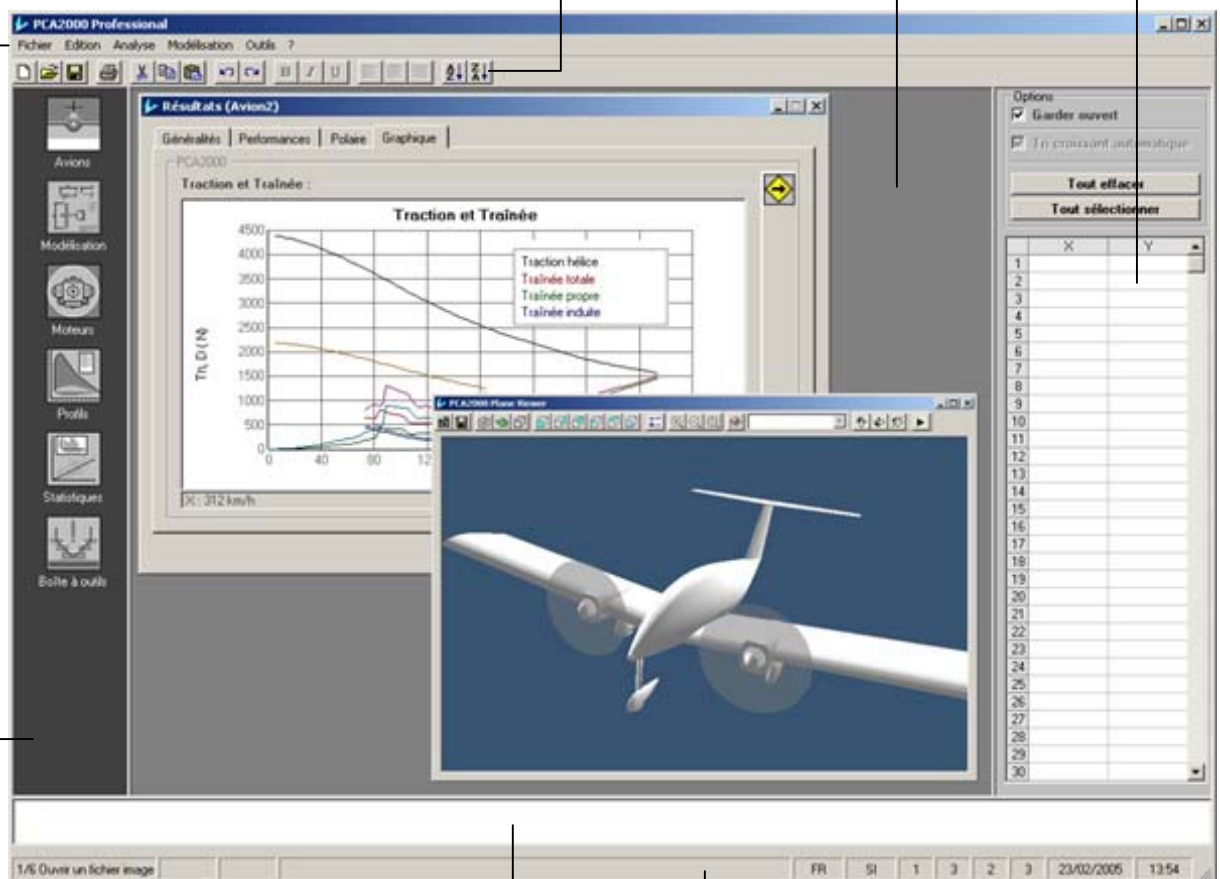
Display grid of the selected points

Displays the digitized points (specific to the Digitizer module)

Toolbar

Allows running the most common functions with a simple click

Display area of the windows



Vertical menu bar

Displays the menus [Analysis], [Design], [Engines], [Profiles], [Statistics] and [Useful tools]

Status bar

Displays the main current options [language], [units systems], [Level of analysis] and [Modeling level]

Display area of the comments

Displays the main operations carried out by the software

The main window as it is shown above shows several windows simultaneously. In normal use, only some of them will be shown.