

15 The file manager

15.1 Introduction

The file manager is a utility program that helps you copying in the appropriate folder the files that OAD has sent you or that you have downloaded from the PCA2000 website.

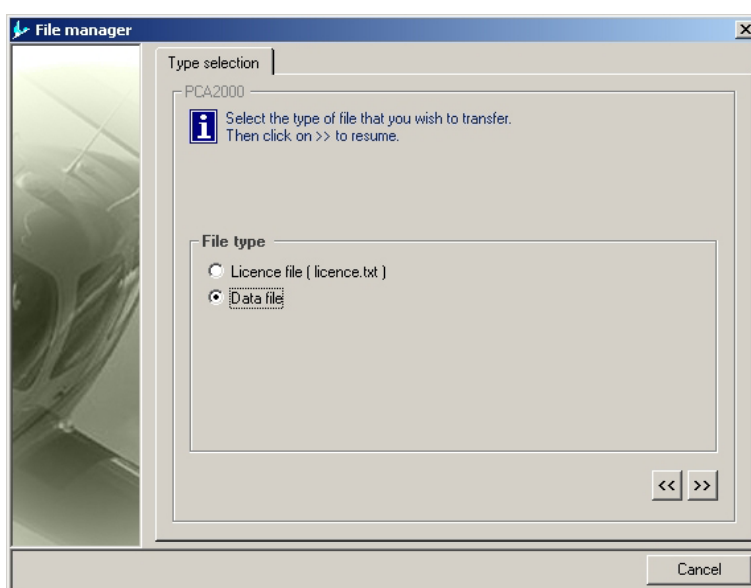


Figure 15.1 : File manager



15.2 Table of content

15	The file manager	1
15.1	Introduction.....	1
15.2	Table of content.....	2
15.3	Description	3

15.3 Description

To access the **file manager**

1. **Click** on [**Tools**] then on [**File manager**] in the toolbar of the main window.

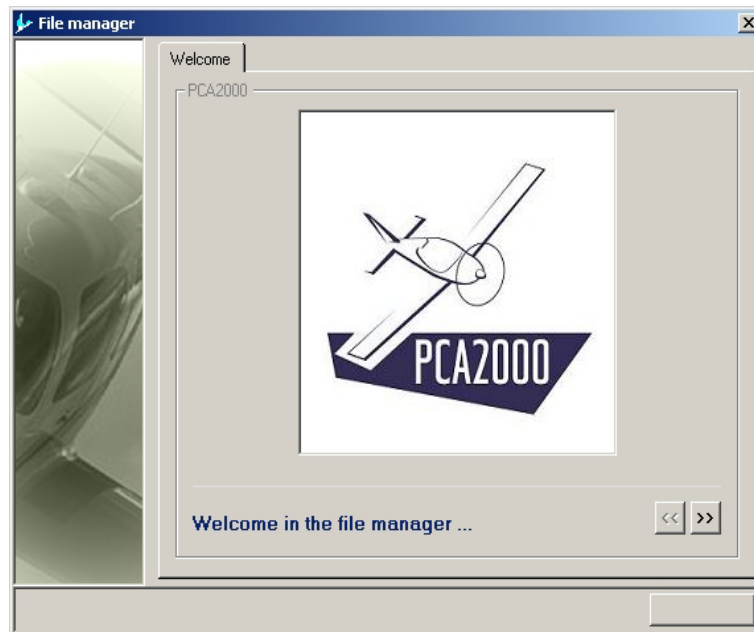


Figure 15.2

2. **Click** on  to go on.

3. **Choose** the type of file that you wish to recover and install in the appropriate folder.

The current version of the software allows you to manage 3 types of files:

- The license file,
- The online help file,
- The data file.
- The update file



The files will have been downloaded beforehand from the PCA2000 website and saved in any folder on the computer hard disk.

In order to find out how to download a data file, go to the **Database** section of the user's manual.

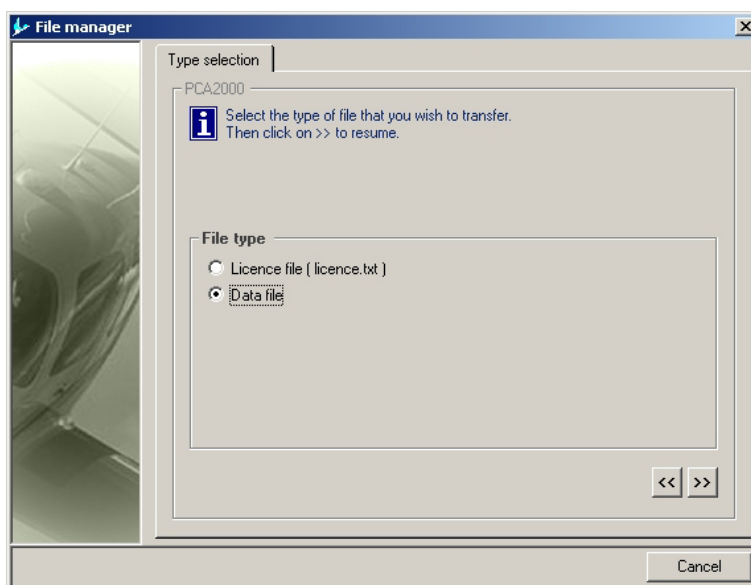


Figure 15.3 : Selection of the type

4. **Click** on  to go on.

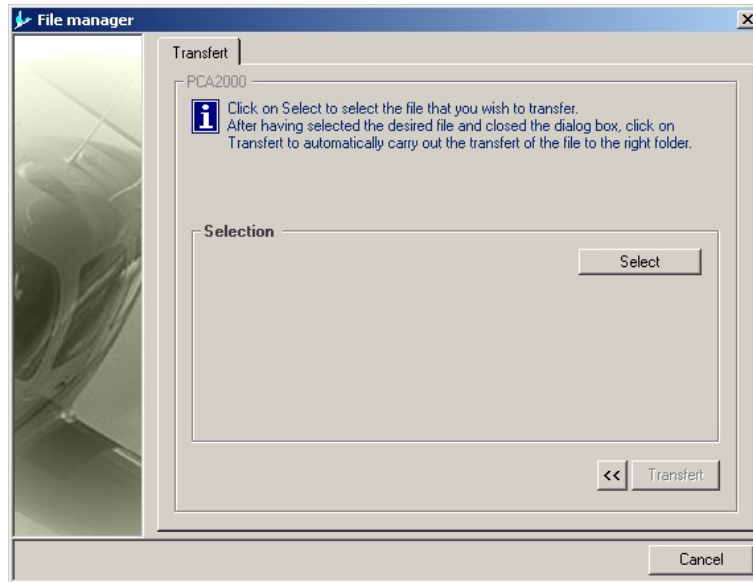



Figure 15.4 : Display the dialogue box Open

5. **Click** then on the control button  to display the dialogue box [Open] that will allow you to find on the computer hard disk the file you wish to recover.

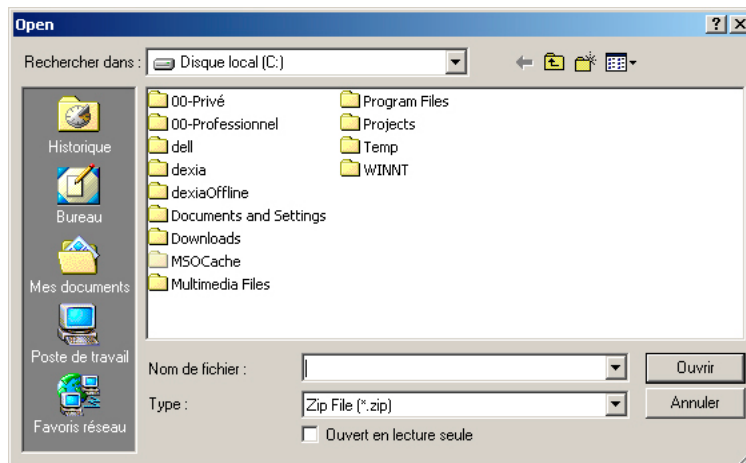




Figure 15.5

6. Once the file selected, **click** on the control button  to close the dialogue box and come back to the file manager.

7. **Click** then on the control button  to copy the selected file from the temporary folder to the appropriate folder.

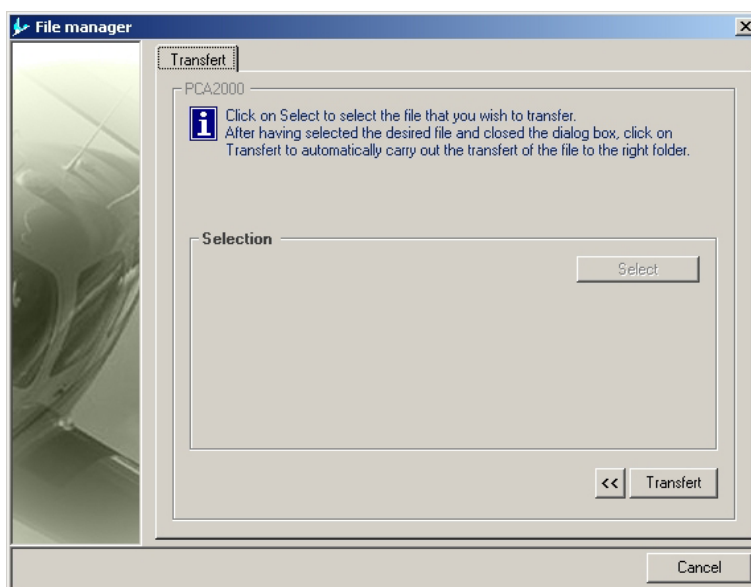


Figure 15.6 : Transfer the selected file

A message informs you about the status of the transfer operation.

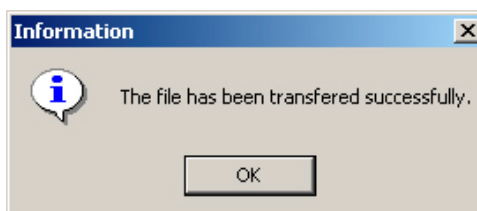
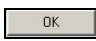


Figure 15.7 : Status of the transfer operation

8. **Click** then on  to come back to the file manager.

9. **Click** then on to leave the file manager or click on to make a new transfer.

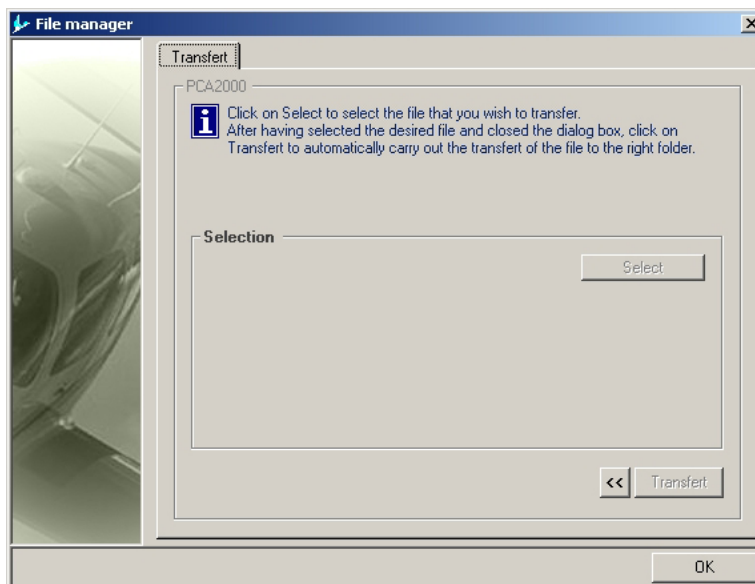


Figure 15.8 : End of the transfer