

14 Database

14.1 Introduction

The **Database** module is used to offer a direct access to the aircrafts, engines and profiles databases available on the PCA2000 website and to make it possible to download and save certain files in whatever folder on the computer disk.

Those databases contain a great number of data files and it will be possible to use them directly in the various PCA2000 modules.

The files related to the **aircrafts** will be used mainly to make a statistical analysis of the existing aircraft. For any further information, please refer to the Statistical analysis chapter of the user's manual.

The files related to the **engines** and **profiles** will be used as input data to make designs.

The Database module can also be used to check or update information related to **companies** active in the aeronautic field.

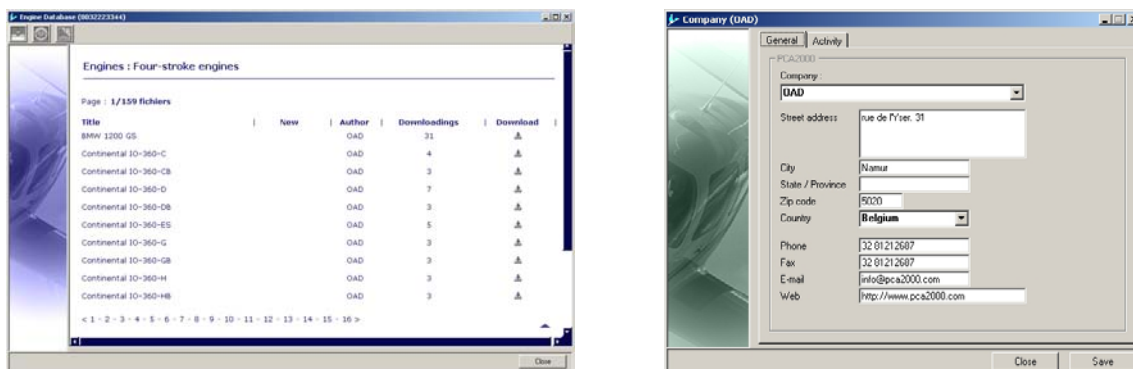


Figure 14.1 : Database and information on the companies



14.2 Table of content

14	DATABASE	1
14.1	Introduction.....	1
14.2	Table of content.....	2
14.3	Description	3
14.3.1	Engines databases.....	5
14.3.2	Aircraft databases	7
14.3.3	Profiles database.....	8
14.3.4	Companies database	9

14.3 Description

To access the **Database** module, click on **[Tools]**, **[Database]** then **[Aircrafts]**, **[Engines]**, **[Profiles]** or **[Companies]** in the menu bar in the main window.



To access the PCA2000 website, your internet connection must be active.

If you select the menu **[Aircrafts]**, **[Engines]** or **[Profiles]**, the **Database** window is displayed. The toolbar of the **Database** window gives you a direct access to the various pages of the website.

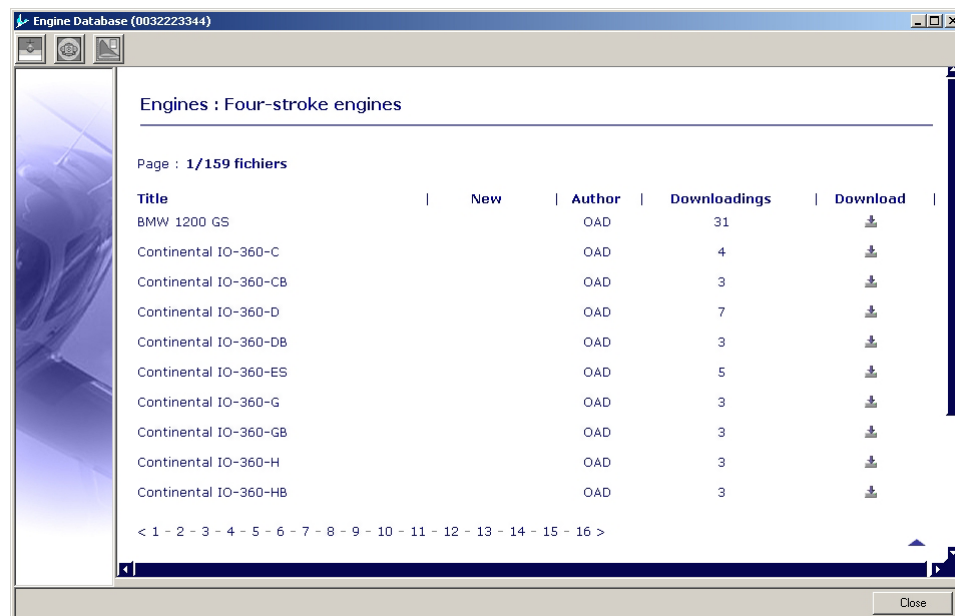
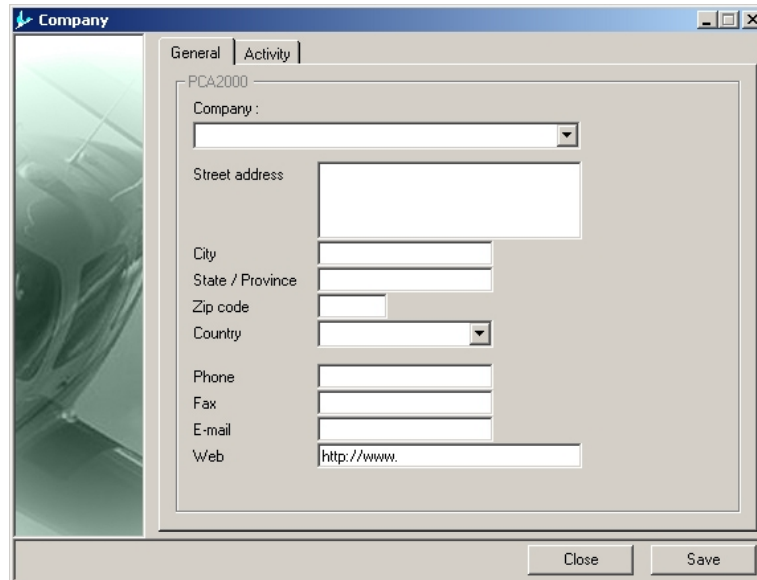


Figure 14.2 : Database

If you select the **[Companies]** menu, the **Companies** window is displayed.



Company

General | Activity

PCA2000

Company :

Street address

City

State / Province

Zip code

Country

Phone

Fax

E-mail

Web http://www.

Close Save

Figure 14.3 : Information on the companies

14.3.1 Engines databases

To access the engines databases,

1. **Click** on  in the toolbar in the **Database** window.

A first page displays the 6 categories in which the engines have been classified

- 4 Strokes
- 2 Strokes
- 4 Strokes Diesel
- 2 Strokes Diesel
- Rotary
- Turbo propeller

2. **Select** a category to access the following page.

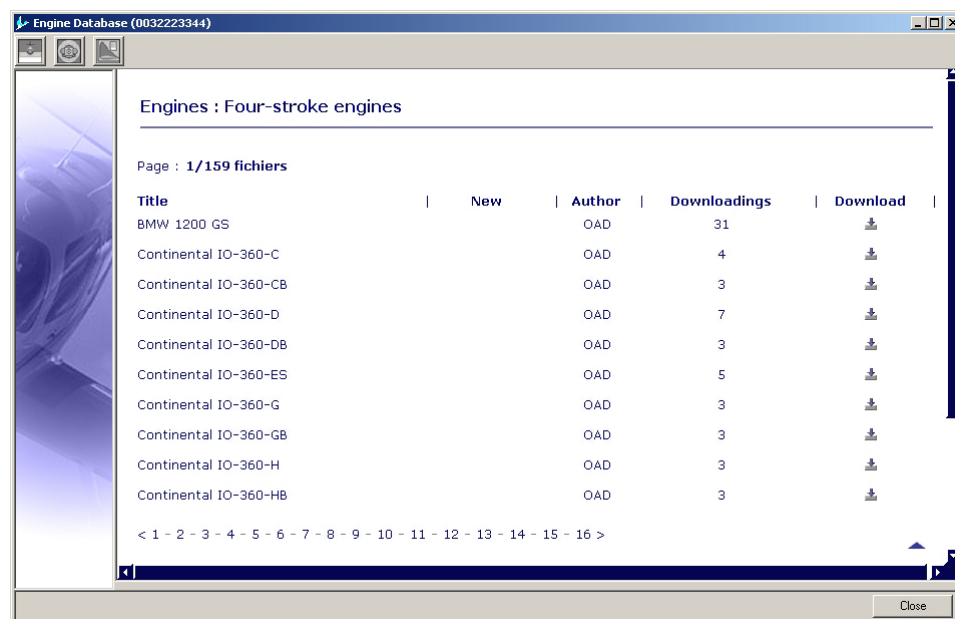


Figure 14.4 : Engines database

A main page is divided in 5 columns.

Column 1: Reference

Column 2: flag which is visible if it concerns a new registry

Column 3: name of the file author

Column 4: number of downloads for the day

Column 5: control button to download the file



The current page (1/44 files) as well as the total number of recordings (1/44 files) are displayed under the title of the page




The recordings are stored by alphabetical order.

14.3.1.1 To access the various pages

To access the various pages, **click** on its number that appears in the list at the bottom of the current page.

14.3.1.2 To download a file

To download a file:

1. **Click** on ,
2. **Insert** your client Id,
3. **Locate** the folder in which you wish to save the file.
4. **Run** the recording



Your client Id is a 10 digit number that has been given to you in the email together with your license. Your number should appear between brackets in the title bar of the window Database.

If it does not appear and you forgot it, please contact OAD. You will receive it as soon as possible.




We advise you to create a separate folder to store all the files that you will download. That folder could be named Downloads for example.



Once the files have been stored in your computer disk, use the PCA2000 file manager to transfer those files of the temporary folder to the appropriate folder. For any further information, please refer to the File manager chapter of the user's manual.

14.3.2 Aircraft databases

To access the aircrafts databases:


1. **Click** on  in the toolbar in the **database** window.

A first page displays the 10 categories in which the aircrafts are classified:

- Light transport plane
- Light aircraft
- Ultra light aircraft
- Seaplane
- Glider
- Powered glider
- Helicopter
- Gyroplane
- Drone
- Scale model

2. **Select** a category to access the following page

3. **Select** a registry in the registries list


4. **Click** on  to download the corresponding data file.

5. **Follow** the instructions that appear on the screen.


.

14.3.3 Profiles database

To access the profiles database:

1. **Click** on  in the toolbar in the **Database** window.

A first page displays the 3 categories in which the profiles have been classified:

- NACA
 - Wortmann
 - Eppler
2. **Select** a category to access the following page
 3. **Select** a registry in the registries list
 4. **Click** on  to download the corresponding data file.
 5. **Follow** the instructions that appear on the screen.

14.3.4 Companies database

To access the **Companies** window, click on **[Tools]**, **[Database]** then **[Companies]** in the menu bar in the main window.

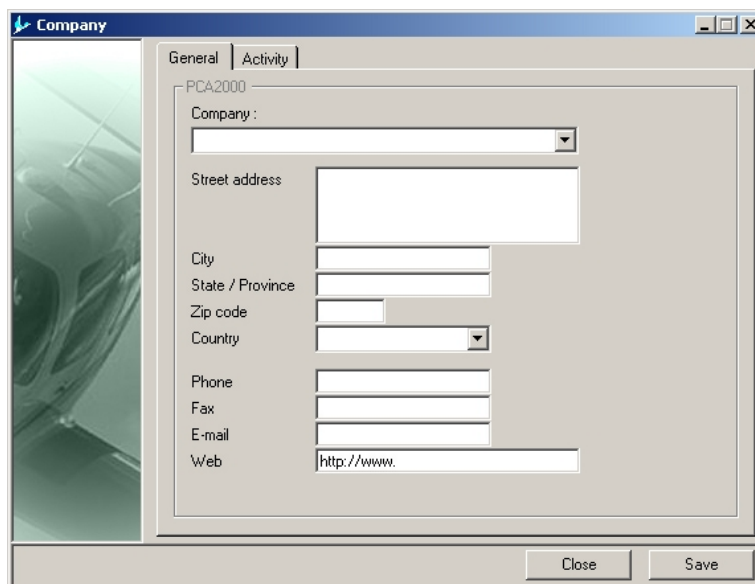


Figure 14.5 : Companies

Once you display the Companies window, all the references related to the **Companies** data files saved in the PCA2000-Data **Companies** folder are automatically loaded in the application.

14.3.4.1 Check the information related to a company

To visualize the information related to a given company, **click** on its name in the drop-down list.

The first tab contains the general information related to the selected company.

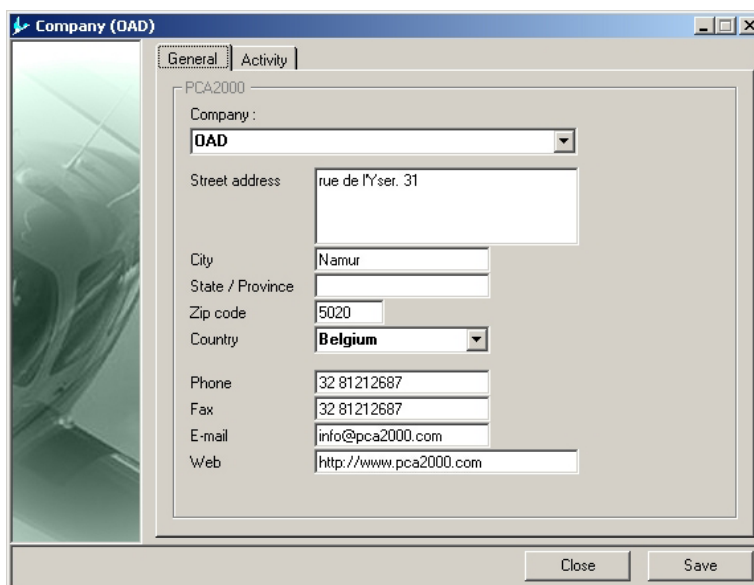


Figure 14.6 : Generalities

The second tab contains all the information related to its activity field.

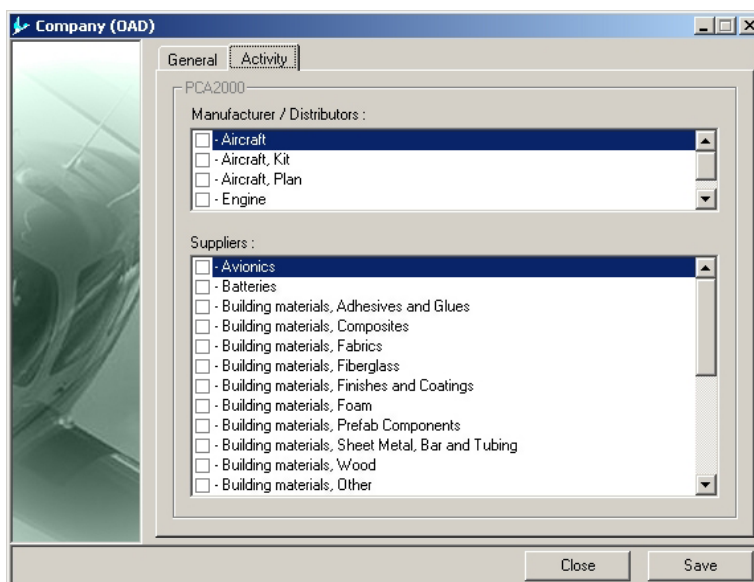


Figure 14.7 : Activity field

14.3.4.2 Insert the information related to a new company

To insert in the database the information related to a new company, **click** on **[File]** then **[New]** in the menu bar in the main window.

The Company window is reset.

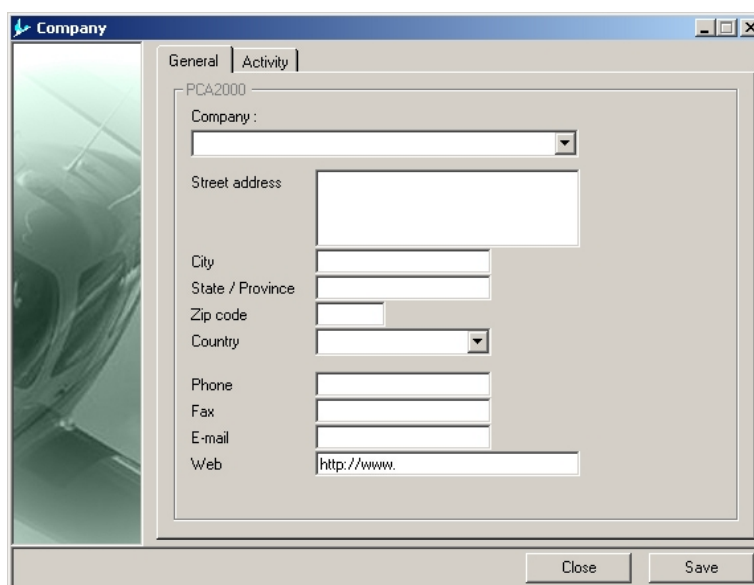



Figure 14.8 : Generalities

14.3.4.3 Save the file related to the new company

To save the information related to a new company in the file, **click** on **[File]** then **[Save as]** in the menu bar in the main window. You can also do it by clicking on  in the toolbar.

The dialogue box **[Save as]** is displayed on the screen.

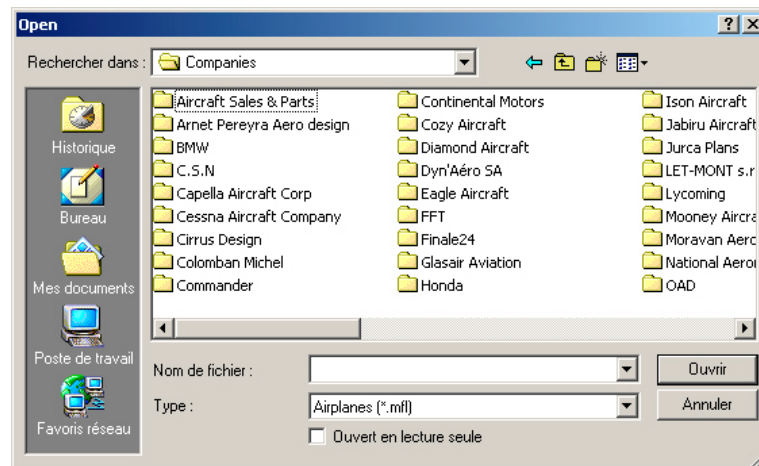


Figure 14.9 : Save the data file